



شركة الاستثمار الوطنية  
NATIONAL INVESTMENTS COMPANY

## Bursa Kuwait – Daily Market Report MENA Securities – Research & Studies Dep.

27<sup>th</sup> October 2022



[www.nic.com.kw](http://www.nic.com.kw)

# DAILY MARKET COVERAGE REPORT

NIC MENA SECURITIES - RESEARCH AND STUDIES DEP



## Kuwait Market Watch

Thursday, October 27, 2022

Index	Close	DTD Chg Net	DTD (%)	YTD (%)	52W High	52W Low	MKT CAP Bn (KD)	PBV (X)	PE (X)	DY (%)
All Share Index	7,231.08	-9.84	-0.14%	2.67%	8,472.15	6,788.83	42.84	1.99	31.03	4.00
Premier Index	8,091.48	-11.07	-0.14%	5.92%	9,437.37	7,343.90	33.75	2.21	32.12	4.43
Main Index	5,428.85	-7.24	-0.13%	-7.77%	6,600.62	5,190.37	9.08	1.17	26.97	2.41
NIC 50 Index	9,065.12	-15.63	-0.17%	6.37%	10,553.82	8,195.69	33.05	2.21	32.12	4.43

Index	Value Mn(KD)	Volume (Mn share)
All Share Index	38.37	132.40
Premier Index	31.69	75.04
Main Index	6.69	57.36
NIC 50 Index	36.60	114.39

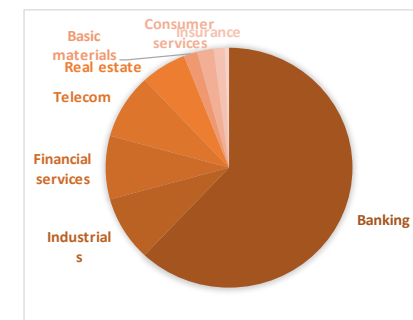
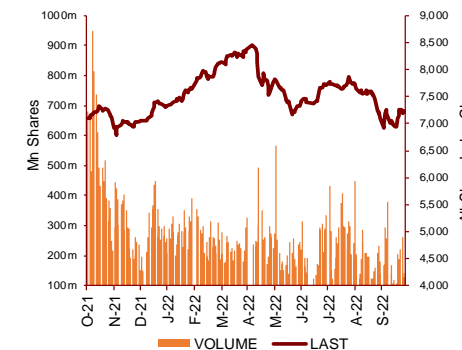
Market Breadth	UP ↑	Down ↓	No Chg ↔
All Share Index	46	63	44
Premier Index	8	12	5
Main Index	38	51	39
NIC 50 Index	14	26	10

Today's Top 5 Gainer %	Close KD	Value KD	DTD (%)
Al-Enmaa Real Estate	0.060	66,783	10.70%
Kuwait and Middle East Financi	0.113	5,685	9.71%
Livestock Transport and Tradin	0.125	885	9.65%
Metal and Recycling	0.075	3,912	7.14%
Advanced Technology	0.499	0	6.17%

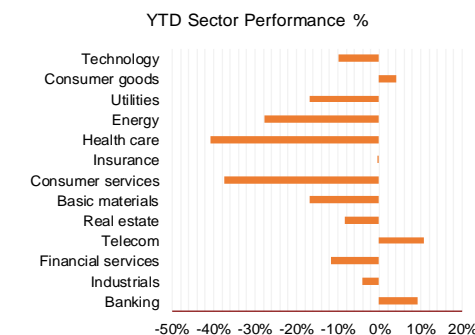
Today's Top 5 Loser %	Close KD	Value KD	DTD (%)
Alafco Aviation Lease and F	0.163	4,324,288	-11.89%
United Projects for Aviation	0.201	1,650	-9.46%
National Petroleum Service	0.671	5,771	-7.19%
Shuaiba Industrial	0.142	26,147	-6.58%
Ekttitab Holding	0.011	7,779	-3.57%

Today's Top 5 by Value	Close KD	Trade Val Mn(KD)	DTD (%)
Kuwait Finance House	0.801	9.65	-0.12%
National Bank of Kuwait	1.055	5.43	-0.09%
Alafco Aviation Lease and Fina	0.163	4.32	-11.89%
Agility Public Warehousing	0.767	2.97	-0.78%
Aayan Leasing and Investment	0.124	2.20	1.64%

Top 5 by Volume	Close KD	Trade Vol Mn(Shrs)	DTD (%)
Alafco Aviation Lease and F	0.163	25.02	-11.89%
Aayan Leasing and Investm	0.124	17.72	1.64%
Kuwait Finance House	0.801	12.09	-0.12%
Commercial Real Estate	0.101	6.86	-1.27%
National Bank of Kuwait	1.055	5.14	-0.09%



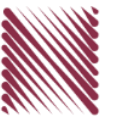
Sector	Close	DTD Chg Net	DTD (%)	YTD (%)	52W High	52W Low	MKT CAP Bn (KD)	PBV (X)	PE (X)	DY (%)
Banking	1,769.12	-1.520	-0.09%	9.1%	1,992.2	1,557.8	26.204	1.62	24.50	1.86
Industrials	1,083.03	-11.860	-1.08%	-4.1%	1,443.6	976.3	3.698	0.99	19.93	3.95
Financial services	1,254.91	-4.090	-0.32%	-11.5%	1,678.3	1,190.4	3.610	1.00	30.06	2.94
Telecom	1,208.53	3.560	0.30%	10.6%	1,514.7	1,055.9	3.698	1.36	13.59	2.82
Real estate	1,216.21	-1.190	-0.10%	-8.2%	1,438.0	1,155.8	2.540	0.69	35.23	1.34
Basic materials	863.44	11.870	1.39%	-16.9%	1,233.3	800.8	0.753	1.21	8.96	6.26
Consumer services	462.58	4.530	0.99%	-37.3%	779.1	448.5	0.918	2.26	27.87	1.76
Insurance	1,529.09	0.110	0.01%	-0.3%	1,675.7	1,434.5	0.609	0.82	44.22	5.26
Health care	481.97	8.780	1.86%	-40.6%	821.7	420.4	0.239	15.77	12.72	1.06
Energy	1,006.45	-27.280	-2.64%	-27.6%	1,592.9	975.7	0.204	0.80	20.87	2.36
Utilities	500.00	0.000	0.00%	-16.7%	650.0	494.7	0.209	2.14	14.55	9.47
Consumer goods	1,386.29	-6.300	-0.45%	4.2%	1,641.0	1,208.7	0.140	0.89	37.81	2.13
Technology	628.56	12.370	2.01%	-9.9%	843.9	539.1	0.009	0.75	NM	-
	7,231.08	-9.84	-0.14%	2.7%	8,472.2	6,788.8	42.84	1.99	31.03	4.00





# DAILY MARKET COVERAGE REPORT

## NIC MENA SECURITIES - RESEARCH AND STUDIES DEP



Premier Market Company	Price			Valuation Multiples			MKT Cap Mn KD	Price Performance		ROE (%)	ROA (%)
	Close (kD)	Day Δ	Day % Δ	PBV(X)	PE (X)	DY%		MTD (%)	YTD (%)		
National Bank of Kuwait	1.055	-0.001	-0.09%	2.03	17.4	2.30	7,968	8.1%	11.2%	11.7%	1.5%
Kuwait Finance House	0.801	-0.001	-0.12%	3.31	27.1	1.36	10,598	-5.0%	6.0%	12.4%	1.6%
Mobile Telecommunications	0.597	0.001	0.17%	2.17	14.1	5.54	2,583	1.5%	0.2%	15.6%	4.3%
Boubyan Bank	0.811	0.001	0.12%	3.21	52.7	0.56	3,032	5.9%	13.7%	6.8%	0.8%
Agility Public Warehousing	0.767	-0.006	-0.78%	1.32	59.4	2.16	1,937	15.0%	-1.8%	2.7%	2.2%
Mabaneer Co.	0.869	0.002	0.23%	1.91	17.9	1.52	1,079	0.7%	15.9%	11.1%	5.5%
Gulf Bank	0.340	0.000	0.00%	1.55	17.8	1.96	1,088	13.3%	28.0%	8.9%	0.9%
Burgan Bank	0.217	-0.001	-0.46%	0.79	21.7	2.18	712	-2.3%	-8.8%	3.8%	0.7%
Human Soft Holding	3.328	0.002	0.06%	3.68	7.7	12.03	405	1.6%	3.2%	48.7%	39.9%
Warba Bank	0.240	0.001	0.42%	1.31	24.1	0.00	480	8.6%	-12.8%	5.8%	0.6%
Qurain Petrochemical Industries	0.260	0.009	3.59%	0.62	9.6	7.17	279	-4.1%	-27.7%	6.4%	5.2%
Boubyan Petrochemical	0.793	0.002	0.25%	1.62	8.9	7.59	414	-4.7%	-7.2%	19.1%	10.1%
Kuwait Projects Company Holding	0.120	0.000	0.00%	0.63	307.7	4.17	293	-9.8%	-15.5%	0.2%	0.1%
Shamal Az-Zour Al-Oula Power & Water	0.190	0.000	0.00%	2.14	14.5	9.47	209	-2.6%	-16.7%	19.1%	2.9%
National Industries Group Holding	0.229	-0.001	-0.43%	0.97	5.3	4.83	494	0.0%	-4.5%	15.2%	6.5%
Boursa Kuwait Securities Co	2.221	-0.017	-0.76%	7.71	23.9	2.90	446	6.8%	10.8%	33.9%	22.2%
Kuwait International Bank	0.189	0.000	0.00%	0.60	34.1	2.04	200	-4.5%	-9.8%	1.7%	0.3%
Jazeera Airways	1.659	-0.021	-1.25%	12.14	13.6	2.74	365	0.2%	30.2%	164.8%	12.1%
Alafco Aviation Lease and Finance	0.163	-0.022	-11.89%	0.69	NM	0.00	155	-6.3%	-15.1%	-15.9%	-3.4%
Mezzan Holding	0.366	-0.003	-0.81%	1.08	37.8	4.25	114	-2.1%	-36.1%	2.8%	1.3%
Gulf Cable and Electrical Industries	1.136	0.007	0.62%	1.05	10.5	5.31	236	6.2%	29.6%	11.0%	9.0%
National Investments	0.234	0.000	0.00%	0.93	8.7	19.23	187	1.3%	6.8%	10.9%	8.9%
Alimtiq Investment Group	0.074	-0.002	-2.76%	0.44	NM	11.84	76	-2.1%	-35.6%	-1.0%	-0.1%
Kuwait Real Estate	0.107	-0.002	-1.83%	0.80	13.3	2.67	99	5.9%	-37.3%	6.0%	2.5%
Integrated Holding	0.324	-0.001	-0.31%	1.34	24.8	3.08	82	-14.7%	-12.2%	5.4%	3.4%
ALI ALGanim	0.796	0.000	0.00%	3.68	12.5	0.00	221	1.4%	nm	27.8%	10.9%
<b>Total</b>		<b>-11.07</b>	<b>-0.14%</b>	<b>2.21</b>	<b>32.12</b>	<b>4.43</b>	<b>33,532</b>	<b>1.7%</b>	<b>5.9%</b>		

Discription	Close (kD)	Day Δ	Day % Δ	50 Day	200 Day	14 Day	Mn KD	MTD(%)	YTD (%)	High	Low
Premier Index	8,091	-11.07	-0.14%	8,282	8,440	49	33,532	1.7%	5.8%	9,437	7,344

### Top 5 Performrs (Today's Price Change)

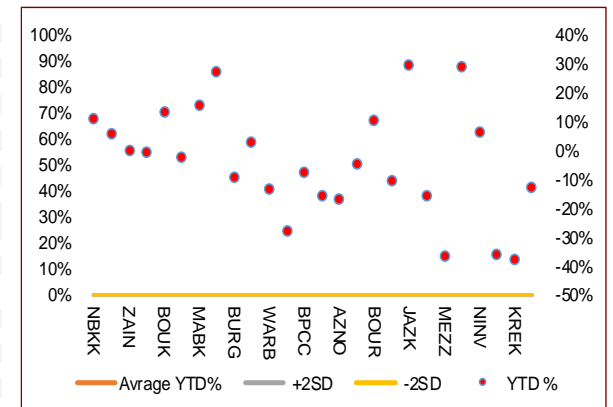
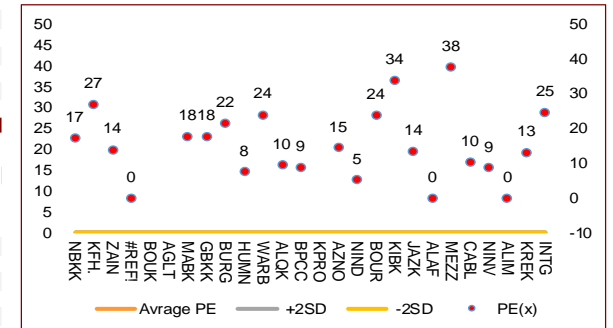
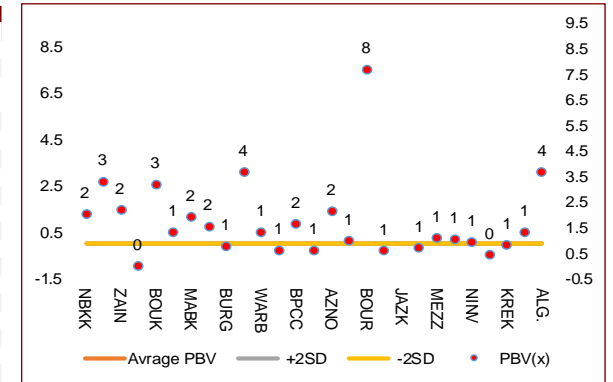
Qurain Petrochemical Industries	0.260	0.009	3.59%	0.288	0.343	44	279	-4.1%	-27.7%	0.403	0.210
Gulf Cable and Electrical Industries	1.136	0.007	0.62%	1.276	1.325	52	236	6.2%	29.6%	1.850	0.860
Warba Bank	0.240	0.001	0.42%	0.238	0.261	63	480	8.6%	-12.8%	0.298	0.216
Boubyan Petrochemical	0.793	0.002	0.25%	0.866	0.937	40	414	-4.7%	-7.2%	1.125	0.769
Mabaneer Co.	0.869	0.002	0.23%	0.849	0.813	52	1,079	0.7%	15.9%	0.910	0.717

### Middel Performrs (Today's Price Change)

Mobile Telecommunications	0.597	0.001	0.17%	0.595	0.611	51	2,583	1.5%	0.2%	0.698	0.564
Boubyan Bank	0.811	0.001	0.12%	0.814	0.806	55	3,032	5.9%	13.7%	0.965	0.681
Human Soft Holding	3.328	0.002	0.06%	3.350	3.314	48	405	1.6%	3.2%	3.704	3.006
Ahli United Bank BSC	#N/A	#N/A	#N/A	0.305	0.286	50	#N/A	#N/A	#N/A	0.336	0.240
Gulf Bank	0.340	0.000	0.00%	0.333	0.320	78	1,088	13.3%	28.0%	0.385	0.230
Kuwait Projects Company Holding	0.120	0.000	0.00%	0.141	0.162	42	293	-9.8%	-15.5%	0.215	0.112
Kuwait International Bank	0.189	0.000	0.00%	0.205	0.219	30	200	-4.5%	-9.8%	0.259	0.186
Shamal Az-Zour Al-Oula Power & Water	0.190	0.000	0.00%	0.197	0.212	38	209	-2.6%	-16.7%	0.247	0.188
National Investments	0.234	0.000	0.00%	0.263	0.314	50	187	1.3%	6.8%	0.475	0.201
National Bank of Kuwait	1.055	-0.001	-0.09%	0.100	0.100	63	7,968	8.1%	11.2%	1.210	0.996
Kuwait Finance House	0.801	-0.001	-0.12%	0.857	0.873	37	10,598	-5.0%	6.0%	1.039	0.720
National Industries Group Holding	0.229	-0.001	-0.43%	0.252	0.259	53	494	0.0%	-4.5%	0.314	0.207
Burgan Bank	0.217	-0.001	-0.46%	0.231	0.254	45	712	-2.3%	-8.8%	0.307	0.205
Boursa Kuwait Securities Co	2.221	-0.017	-0.76%	2.257	2.366	69	446	6.8%	10.8%	2.870	1.800

### Bottom 5 Performrs (Today's Price Change)

Agility Public Warehousing	0.767	-0.006	-0.78%	0.766	0.855	68	1,937	15.0%	-1.8%	1.062	0.634
Mezzan Holding	0.366	-0.003	-0.81%	0.395	0.494	43	114	-2.1%	-36.1%	0.619	0.358
Kuwait Real Estate	0.107	-0.002	-1.83%	0.114	0.146	64	99	5.9%	-37.3%	0.187	0.097
Alimtiq Investment Group	0.074	-0.002	-2.76%	0.084	0.108	57	76	-2.1%	-35.6%	0.138	0.069
Alafco Aviation Lease and Finance	0.163	-0.022	-11.89%	0.185	0.204	65	155	-6.3%	-15.1%	0.256	0.167



# DAILY MARKET COVERAGE REPORT

## NIC MENA SECURITIES - RESEARCH AND STUDIES DEP



Banking Sector		Price			Valuation Multiples			MKT Cap	Price Performance		Trading Indicators		ROE	ROA	52 Week (KD)		MKT Cap
Company	Close (KD)	Day Δ	Day % Δ	PBV(X)	PE(X)	DY%	Mn KD	MTD(%)	YTD (%)	Value (Mn KD)	(Mn Shrs)	(%)	(%)	High	Low	%	
National Bank of Kuwait	1.055	-0.001	-0.09%	2.03	17.41	2.30	7,968	8.1%	11.2%	5.43	5.14	11.7%	1.5%	1.104	0.903	18.60%	
Kuwait Finance House	0.801	-0.001	-0.12%	3.31	27.06	1.36	10,598	-5.0%	6.0%	9.65	12.09	12.4%	1.6%	1.039	0.720	24.74%	
Boubyan Bank	0.811	0.001	0.12%	3.21	52.70	0.56	3,032	5.9%	13.7%	0.54	0.66	6.8%	0.8%	0.965	0.681	7.08%	
Commercial Bank of Kuwait	0.486	0.000	0.00%	1.15	12.11	4.12	963	0.2%	-3.0%	0.00	0.00	9.9%	1.9%	0.549	0.456	2.25%	
Gulf Bank	0.340	0.000	0.00%	1.55	17.85	1.96	1,088	13.3%	28.0%	0.51	1.50	8.9%	0.9%	0.385	0.230	2.54%	
Burgan Bank	0.217	-0.001	-0.46%	0.79	21.67	2.18	712	-2.3%	-8.8%	0.23	1.07	3.8%	0.7%	0.307	0.205	1.66%	
Ahli United Bank	0.263	0.000	0.00%	0.89	23.19	1.81	592	0.8%	-10.6%	0.06	0.24	3.8%	0.8%	0.324	0.250	1.38%	
Warba Bank	0.240	0.001	0.42%	1.31	24.12	0.00	480	8.6%	-12.8%	0.73	3.02	5.8%	0.6%	0.298	0.216	1.12%	
Al Ahli Bank of Kuwait	0.322	-0.004	-1.23%	0.96	21.42	1.46	570	9.2%	34.8%	0.63	1.93	4.5%	0.6%	0.355	0.216	1.33%	
Kuwait International Bank	0.189	0.000	0.00%	0.60	34.05	2.04	200	-4.5%	-9.8%	0.65	3.45	1.7%	0.3%	0.259	0.186	0.47%	
<b>Total Banking Sector - 10 Companies</b>							<b>26,204</b>			<b>18.42</b>	<b>29.10</b>					<b>61.18%</b>	

Basic Materials		Price			Valuation Multiples			MKT Cap	Price Performance		Trading Indicators		ROE	ROA	52 Week (KD)		MKT Cap
Company	Close (KD)	Day Δ	Day % Δ	PBV(X)	PE(X)	DY%	Mn KD	MTD(%)	YTD (%)	Value (Mn KD)	(Mn Shrs)	(%)	(%)	High	Low	%	
Qurain Petrochemical Industries	0.260	0.009	3.59%	0.62	9.60	7.17	279	-4.06%	-27.67%	0.10	0.39	6.4%	5.2%	0.403	0.210	0.65%	
Boubyan Petrochemical	0.793	0.002	0.25%	1.62	8.95	7.59	414	-4.70%	-7.16%	0.28	0.35	19.1%	10.1%	1.125	0.769	0.97%	
Al Kout Industrial Projects	0.390	0.000	0.00%	1.40	4.93	10.26	39	-3.94%	-21.37%	0.00	0.00	30.5%	20.1%	0.545	0.390	0.09%	
Kuwait Foundry	0.285	-0.005	-1.72%	1.20	12.36	0.00	21	-1.72%	-21.41%	0.00	0.00	10.7%	10.3%	0.424	0.260	0.05%	
<b>Total Basic Materials - 4 Companies</b>							<b>753</b>			<b>0.38</b>	<b>0.74</b>					<b>1.76%</b>	

Consumer Goods		Price			Valuation Multiples			MKT Cap	Price Performance		Trading Indicators		ROE	ROA	52 Week (KD)		MKT Cap
Company	Close (KD)	Day Δ	Day % Δ	PBV(X)	PE(X)	DY%	Mn KD	MTD(%)	YTD (%)	Value (Mn KD)	(Mn Shrs)	(%)	(%)	High	Low	%	
Mezzan Holding	0.366	-0.003	-0.81%	1.08	37.81	4.25	114	-2.1%	-36.1%	0.42	1.16	2.8%	1.3%	0.619	0.358	0.27%	
Livestock Transport and Trading	0.125	0.011	9.65%	0.70	NM	0.00	26	4.2%	-37.4%	0.00	0.01	-14.5%	-8.2%	0.196	0.112	0.06%	
<b>Total Consumer Goods - 2 Companies</b>							<b>140</b>			<b>0.42</b>	<b>1.16</b>					<b>0.33%</b>	

Consumer Services		Price			Valuation Multiples			MKT Cap	Price Performance		Trading Indicators		ROE	ROA	52 Week (KD)		MKT Cap
Company	Close (KD)	Day Δ	Day % Δ	PBV(X)	PE(X)	DY%	Mn KD	MTD(%)	YTD (%)	Value (Mn KD)	(Mn Shrs)	(%)	(%)	High	Low	%	
Jazeera Airways	1.659	-0.021	-1.25%	12.14	13.58	2.74	365	0.2%	30.2%	0.53	0.32	164.8%	12.1%	2.099	0.981	0.85%	
Kuwait National Cinema	0.862	0.012	1.41%	1.04	8.28	3.53	80	-3.1%	-3.6%	0.00	0.00	13.3%	6.1%	0.933	0.850	0.19%	
Oula Fuel Marketing	0.145	0.000	0.00%	0.90	15.64	3.45	59	0.0%	-7.1%	0.00	0.02	5.6%	2.9%	0.178	0.140	0.14%	
Al Soor Fuel Marketing	0.148	0.000	0.00%	0.87	18.88	3.38	60	-1.3%	-4.5%	0.00	0.02	4.8%	3.6%	0.175	0.142	0.14%	
Sultan Center Food Products	0.112	-0.002	-1.75%	0.66	0.91	0.00	31	-2.6%	-45.7%	0.03	0.24	74.2%	12.2%	0.269	0.103	0.07%	
Jiyad Holding	0.022	-0.001	-2.62%	0.26	NM	0.00	4	-16.5%	-71.6%	0.01	0.66	-16.2%	-10.9%	0.099	0.015	0.01%	
IFA Hotels and Resorts	0.027	0.000	-1.46%	3.61	182.67	0.00	17	-2.5%	-48.8%	0.01	0.36	2.0%	0.4%	0.073	0.025	0.04%	
Kuwait Resorts	0.076	-0.001	-0.91%	0.50	10.80	3.83	15	-2.1%	-20.5%	0.05	0.73	4.8%	4.2%	0.110	0.067	0.03%	
Future Kid Entertainment and Real Estate	0.116	0.002	1.75%	0.99	9.97	0.00	13	6.4%	44.9%	0.00	0.01	10.4%	4.7%	0.130	0.074	0.03%	
Al Eid Food	0.236	-0.001	-0.42%	1.87	14.41	2.89	40	6.8%	2.7%	0.01	0.06	13.5%	10.1%	0.304	0.207	0.09%	
Kuwait Hotels	0.170	0.006	3.66%	2.06	18.98	3.05	10	-7.6%	134.3%	0.00	0.00	11.1%	7.4%	0.201	0.070	0.02%	
Palms Agro Production	0.078	0.000	0.00%	0.79	NM	0.00	4	1.8%	14.4%	0.00	0.00	-13.8%	-10.9%	0.083	0.043	0.01%	
ALI ALGanim	0.796	0.000	0.00%	3.68	12.48	0.00	221	1.4%	nm	0.19	0.24	27.8%	10.9%	0.966	0.750	0.52%	
<b>Total Consumer Services - 13 Companies</b>							<b>918</b>			<b>0.85</b>	<b>2.65</b>					<b>2.14%</b>	



# DAILY MARKET COVERAGE REPORT

## NIC MENA SECURITIES - RESEARCH AND STUDIES DEP



Financial Services	Price			Valuation Multiples			MKT Cap	Price Performance		Trading Indicators		ROE	ROA	52 Week (KD)		MKT Cap
	Company	Close (KD)	Day Δ	Day % Δ	PBV(X)	PE(X)		DY%	Mn KD	MTD(%)	YTD (%)			Value (Mn KD)	(Mn Shrs)	
Egypt Kuwait Holding	0.373	-0.004	-1.06%	2.18	5.90	5.67	420	-2.9%	-11.1%	0.01	0.02	37.1%	17.5%	0.465	0.353	0.98%
Kuwait Projects Company Holding	0.120	0.000	0.00%	0.63	307.69	4.17	293	-9.8%	-15.5%	0.12	1.03	0.2%	0.1%	0.215	0.112	0.68%
National Industries Group Holding	0.229	-0.001	-0.43%	0.97	5.29	4.83	494	0.0%	-4.5%	1.03	4.51	15.2%	6.5%	0.314	0.207	1.15%
Boursa Kuwait Securities Co	2.221	-0.017	-0.76%	7.71	23.94	2.90	446	6.8%	10.8%	0.10	0.04	33.9%	22.2%	2.870	1.800	1.04%
GFH Financial Group	0.077	-0.001	-0.64%	0.89	9.55	4.67	269	-0.6%	-21.0%	0.19	2.44	9.3%	1.2%	0.109	0.071	0.63%
National Investments	0.234	0.000	0.00%	0.93	8.75	19.23	187	1.3%	6.8%	0.33	1.41	10.9%	8.9%	0.475	0.201	0.44%
Tamdeen Investment	0.540	0.001	0.19%	0.62	13.94	1.86	184	13.7%	42.2%	0.00	0.00	4.9%	3.8%	0.539	0.309	0.43%
Alimtiqaz Investment Group	0.074	-0.002	-2.76%	0.44	NM	11.84	76	-2.1%	-35.6%	0.11	1.54	-1.0%	-0.1%	0.138	0.069	0.18%
Commercial Facilities	0.175	0.001	0.57%	0.56	6.44	8.62	89	1.7%	-15.5%	0.04	0.22	8.8%	5.0%	0.228	0.165	0.21%
Aayan Leasing and Investment	0.124	0.002	1.64%	0.90	11.55	0.00	82	10.7%	-26.3%	2.20	17.72	8.2%	6.0%	0.204	0.104	0.19%
Kuwait Investment	0.129	-0.002	-1.53%	0.63	7.59	19.08	71	0.0%	-53.4%	0.05	0.36	8.1%	4.6%	0.317	0.113	0.17%
Noor Financial Investment	0.180	-0.004	-2.17%	1.14	5.15	2.61	92	0.0%	-27.7%	0.01	0.05	22.7%	16.0%	0.319	0.163	0.21%
Arzan Financial Group for Financing and Investmei	0.127	0.001	0.79%	0.84	7.91	1.92	102	5.0%	-19.0%	0.16	1.24	11.3%	8.2%	0.180	0.109	0.24%
Kuwait Financial Centre	0.106	0.001	0.95%	0.51	7.94	9.07	53	-11.7%	-39.1%	0.02	0.20	6.9%	4.0%	0.197	0.101	0.12%
Gulf Investment House	0.400	0.000	0.00%	3.81	NM	0.00	163	-2.0%	33.3%	0.00	0.00	-3.0%	-2.0%	0.422	0.217	0.38%
Arabi Group Holdings	0.287	-0.003	-1.03%	1.73	NM	0.00	47	6.7%	-0.3%	0.01	0.05	-29.0%	-4.0%	0.499	0.154	0.11%
Kuwait and Middle East Financial Investment	0.113	0.010	9.71%	0.89	11.99	6.80	25	-1.7%	-31.3%	0.01	0.05	7.5%	5.2%	0.175	0.094	0.06%
Privatization Holding	0.037	0.001	1.94%	0.30	NM	0.00	22	1.9%	-34.3%	0.00	0.00	-7.1%	-5.5%	0.070	0.032	0.05%
Asiya Capital Investments	0.040	0.000	-0.74%	0.36	2.22	0.00	31	-0.5%	-22.5%	0.03	0.65	17.9%	17.6%	0.071	0.037	0.07%
Umm Al Qaiwain General Investment Co	0.094	0.000	0.00%	0.57	4.97	5.32	34	1.1%	7.8%	0.00	0.00	12.0%	10.0%	0.108	0.077	0.08%
Securities House	0.058	-0.001	-1.19%	0.59	10.09	0.00	25	2.1%	-40.2%	0.03	0.56	5.8%	5.0%	0.114	0.052	0.06%
Kamco Investment	0.097	0.000	0.00%	0.54	3.84	10.31	33	-1.9%	-24.8%	0.02	0.22	14.5%	6.9%	0.167	0.089	0.08%
First Investment	0.073	0.000	0.00%	0.64	104.29	0.00	33	2.0%	-13.3%	0.02	0.21	0.6%	0.7%	0.104	0.068	0.08%
Inovest BSC Public	0.075	-0.002	-2.48%	0.00	NM	0.00	22	-4.7%	-35.2%	0.04	0.57	2.7%	1.7%	0.189	0.070	0.05%
Coast Investment and Development	0.079	0.000	0.00%	0.78	10.81	6.33	37	-0.6%	-24.8%	0.00	0.01	7.2%	6.8%	0.126	0.066	0.09%
Al Madar Investment	0.103	0.000	0.00%	0.97	60.23	0.00	21	2.7%	-13.4%	0.00	0.00	1.6%	1.7%	0.126	0.083	0.05%
Bayan Investment	0.035	0.000	0.00%	0.31	NM	0.00	13	0.0%	-28.8%	0.00	0.00	-0.5%	-0.6%	0.060	0.031	0.03%
Al Manar Financing and Leasing	0.055	0.000	0.00%	0.54	17.92	0.00	15	4.2%	-11.8%	0.00	0.00	2.9%	2.3%	0.079	0.049	0.03%
Manazel Holding	0.027	0.000	1.12%	0.58	9.14	0.00	12	-4.9%	-47.9%	0.00	0.19	6.2%	2.0%	0.060	0.025	0.03%
Kuwait Finance and Investment	0.063	0.003	5.35%	0.44	26.00	0.00	19	-1.6%	-31.1%	0.00	0.00	1.7%	1.6%	0.104	0.055	0.05%
National International Holding	0.102	-0.001	-0.97%	0.59	7.69	4.71	23	-5.6%	-30.2%	0.04	0.39	7.6%	5.3%	0.167	0.091	0.05%
Osoul Investment	0.092	-0.001	-1.29%	0.85	NM	11.39	12	26.8%	13.8%	0.00	0.00	-4.4%	-4.0%	0.118	0.062	0.03%
UniCap Investment and Finance	0.054	0.002	3.85%	0.57	61.06	0.00	12	-6.6%	-24.2%	0.00	0.02	1.9%	0.2%	0.097	0.050	0.03%
Amar Finance and Leasing	0.063	0.001	1.61%	0.57	3.36	0.00	12	-1.1%	-5.3%	0.00	0.05	18.6%	17.3%	0.082	0.058	0.03%
Gulf North Africa Holding	0.148	0.000	0.00%	1.72	59.40	0.00	20	9.6%	71.9%	0.20	1.32	3.0%	2.4%	0.141	0.057	0.05%
International Financial Advisors	0.085	0.000	0.00%	0.55	34.14	0.00	21	-6.1%	-24.8%	0.00	0.01	1.9%	0.7%	0.129	0.082	0.05%
Credit Rating and Collection	0.016	0.000	0.00%	0.55	NM	0.00	3	-6.4%	-60.0%	0.00	0.00	-0.4%	-0.3%	0.069	0.014	0.01%
Ekttitab Holding	0.011	0.000	-3.57%	0.36	NM	0.00	3	-1.8%	-47.4%	0.01	0.72	-16.8%	-12.9%	0.024	0.009	0.01%
Kuwait Syrian Holding Co	0.034	0.000	0.00%	0.33	5.48	0.00	6	-8.1%	-20.6%	0.00	0.00	8.7%	6.2%	0.060	0.026	0.01%
Warba Capital Holding	0.089	-0.001	-0.89%	1.00	NM	0.00	9	-9.2%	4.4%	0.00	0.00	-0.8%	-0.7%	0.121	0.070	0.02%
National Consumer Holding	0.110	0.000	0.00%	4.98	NM	0.00	33	-1.8%	-8.3%	0.30	2.70	-8.0%	-7.5%	0.175	0.097	0.08%
Al Deera Holding	0.168	0.005	3.07%	1.09	8.21	0.00	15	0.6%	-18.5%	0.00	0.00	12.5%	6.5%	0.200	0.145	0.04%
AL Safat Investment	0.094	-0.003	-2.69%	1.23	NM	0.00	27	-16.2%	-20.8%	0.14	1.49	-1.8%	-1.6%	0.270	0.091	0.06%
Gulf Franchising Holding	0.081	0.000	0.00%	1.59	NM	0.00	3	-2.3%	-15.5%	0.00	0.00	-5.7%	-1.6%	0.148	0.063	0.01%
<b>Total Financial Services - 44 Companies</b>							<b>3,608</b>			<b>5.22</b>	<b>40.00</b>					<b>8.42%</b>

# DAILY MARKET COVERAGE REPORT

## NIC MENA SECURITIES - RESEARCH AND STUDIES DEP



Health Care	Price			Valuation Multiples			MKT Cap	Price Performance		Trading Indicators		ROE	ROA	52 Week (KD)		MKT Cap
	Company	Close (KD)	Day Δ	Day % Δ	PBV(X)	PE(X)		DY%	Mn KD	MTD(%)	YTD (%)			Value (Mn KD)	(Mn Shrs)	
Al-Maidan Clinic for Oral Health Services	0.695	0.000	0.00%	2.76	15.29	0.00	156	9.9%	-49.6%	0.00	0.00	19.4%	12.5%	1.400	0.556	0.37%
Advanced Technology	0.499	0.029	6.17%	1.05	10.15	3.19	75	-4.0%	-9.3%	0.00	0.00	10.7%	2.1%	0.595	0.450	0.17%
Yiaco Medical	0.450	0.000	0.00%	43.51	NM	0.00	8	0.0%	2.7%	0.00	0.00	-161.7%	-4.7%	0.480	0.399	0.02%
<b>Total Health Care - 3 Companies</b>							<b>239</b>			<b>0.00</b>	<b>0.00</b>					<b>0.56%</b>

Industrials	Price			Valuation Multiples			MKT Cap	Price Performance		Trading Indicators		ROE	ROA	52 Week (KD)		MKT Cap
	Company	Close (KD)	Day Δ	Day % Δ	PBV(X)	PE(X)		DY%	Mn KD	MTD(%)	YTD (%)			Value (Mn KD)	(Mn Shrs)	
Agility Public Warehousing	0.767	-0.006	-0.78%	1.32	59.37	2.16	1,937	15.0%	-1.8%	2.97	3.88	2.7%	2.2%	1.062	0.634	4.52%
Human Soft Holding	3.328	0.002	0.06%	3.68	7.69	12.03	405	1.6%	3.2%	0.43	0.13	48.7%	39.9%	3.704	3.006	0.95%
Alafco Aviation Lease and Finance	0.163	-0.022	-11.89%	0.69	NM	0.00	155	-6.3%	-15.1%	4.32	25.02	-15.9%	-3.4%	0.256	0.167	0.36%
Kuwait Cement	0.209	0.005	2.45%	0.75	NM	2.45	149	1.0%	-11.7%	0.01	0.06	-1.1%	-0.7%	0.295	0.194	0.35%
Gulf Cable and Electrical Industries	1.136	0.007	0.62%	1.05	10.47	5.31	236	6.2%	29.6%	0.12	0.11	11.0%	9.0%	1.850	0.860	0.55%
Integrated Holding	0.324	-0.001	-0.31%	1.34	24.85	3.08	82	-14.7%	-12.2%	0.78	2.38	5.4%	3.4%	0.478	0.325	0.19%
Kuwait Portland Cement	0.793	-0.002	-0.25%	1.11	16.63	8.81	79	-2.6%	-18.9%	0.03	0.03	6.8%	5.3%	1.240	0.751	0.19%
Educational Holding Group	2.490	0.000	0.00%	4.23	9.46	21.40	52	-17.0%	-37.8%	0.00	0.00	30.0%	17.2%	5.024	2.462	0.12%
United Projects for Aviation Services	0.201	-0.021	-9.46%	0.81	79.29	0.00	76	-9.0%	-10.5%	0.00	0.01	1.0%	0.6%	0.318	0.182	0.18%
Heavy Engineering Industries and Shipbuilding	0.620	0.000	0.00%	1.66	20.48	3.23	112	-3.7%	21.8%	0.09	0.14	8.2%	3.2%	0.960	0.442	0.26%
National Industries	0.191	0.000	0.00%	0.77	11.14	5.24	67	5.5%	-1.0%	0.00	0.00	6.8%	5.1%	0.260	0.181	0.16%
ACICO Industries	0.090	-0.002	-2.17%	0.42	NM	0.00	30	2.5%	-33.7%	0.03	0.30	-1.9%	-0.5%	0.208	0.076	0.07%
Kuwait Company for Process Plant Construction a	0.303	-0.011	-3.50%	1.26	20.35	7.89	36	0.7%	-33.8%	0.01	0.02	6.1%	3.5%	0.522	0.286	0.08%
Ras Al Khaimah for White Cement and Constructi	0.140	-0.001	-0.71%	1.23	27.37	5.88	70	-4.8%	11.9%	0.00	0.02	4.6%	3.7%	0.175	0.113	0.16%
Combined Group Contracting	0.420	-0.007	-1.64%	1.59	6.54	5.85	72	5.3%	20.6%	0.06	0.14	26.3%	5.8%	0.500	0.308	0.17%
Kuwait and Gulf Link Transport	0.056	-0.001	-0.88%	0.33	3.05	0.00	15	-0.9%	-17.2%	0.01	0.13	11.6%	2.6%	0.106	0.054	0.04%
Shuaiba Industrial	0.142	-0.010	-6.58%	0.84	12.65	7.89	14	-12.3%	-32.4%	0.03	0.18	6.6%	5.4%	0.310	0.137	0.03%
National Cleaning	0.038	0.001	1.60%	0.30	NM	0.00	9	12.1%	-34.3%	0.00	0.07	-13.9%	-4.1%	0.080	0.031	0.02%
Fujairah Cement Industries	0.038	0.000	-0.52%	0.23	NM	0.00	14	-2.8%	-28.5%	0.00	0.00	-12.7%	-6.3%	0.069	0.028	0.03%
Mubarrad Holding	0.077	0.001	0.66%	0.59	6.43	6.58	13	-0.5%	-30.9%	0.00	0.01	9.3%	8.2%	0.130	0.071	0.03%
Specialities Group Holding	0.088	0.000	-0.46%	0.47	9.55	7.73	14	4.2%	-29.3%	0.03	0.31	5.0%	3.6%	0.157	0.076	0.03%
Salbookh Trading	0.019	0.001	5.00%	0.54	NM	0.00	2	0.5%	-58.5%	0.00	0.11	-51.7%	-28.6%	0.070	0.016	0.00%
Metal and Recycling	0.075	0.005	7.14%	0.90	NM	0.00	7	1.4%	-26.3%	0.00	0.05	-12.0%	-2.0%	0.136	0.060	0.02%
Equipment Holding	0.032	0.001	4.58%	0.49	NM	0.00	3	-5.9%	-43.9%	0.00	0.00	-11.1%	-3.2%	0.079	0.030	0.01%
Jassim Transport & Stevedoring	0.329	0.018	5.79%	1.05	13.56	5.14	49	0.0%	-23.6%	0.01	0.12	8.0%	6.3%	0.413	0.300	0.12%
<b>Total Industrials - 24 Companies</b>							<b>3,698</b>			<b>8.93</b>	<b>33.22</b>					<b>8.63%</b>

# DAILY MARKET COVERAGE REPORT

NIC MENA SECURITIES - RESEARCH AND STUDIES DEP



Insurance	Price			Valuation Multiples			MKT Cap	Price Performance		Trading Indicators		ROE	ROA	52 Week (KD)		MKT Cap
	Company	Close (KD)	Day Δ	Day % Δ	PBV(X)	PE(X)		DY%	Mn KD	MTD(%)	YTD (%)			Value (Mn KD)	(Mn Shrs)	
Gulf Insurance Group	0.985	0.000	0.00%	1.14	4.22	10.76	279	-1.0%	-7.9%	0.00	0.00	28.6%	5.5%	1.200	0.871	0.65%
Al Ahleia Insurance	0.519	0.000	0.00%	0.87	7.16	6.74	112	9.0%	2.8%	0.00	0.00	12.5%	4.4%	0.612	0.453	0.26%
Kuwait Insurance	0.490	0.003	0.62%	0.73	7.55	6.78	91	8.9%	25.8%	0.01	0.02	10.4%	6.1%	0.497	0.379	0.21%
Kuwait Reinsurance	0.286	0.000	0.00%	1.03	10.10	1.60	68	-3.1%	13.4%	0.00	0.00	10.8%	3.4%	0.373	0.217	0.16%
Bahrain Kuwait Insurance	0.191	0.000	0.00%	1.33	11.98	8.44	29	0.0%	0.0%	0.00	0.00	11.0%	2.1%	0.191	0.191	0.07%
Warba Insurance and Reinsurance	0.126	-0.003	-2.33%	0.55	8.97	7.75	21	-2.3%	-18.9%	0.00	0.00	6.2%	2.1%	0.170	0.119	0.05%
First Takaful Insurance	0.046	0.000	0.00%	0.60	284.38	0.00	5	-4.2%	-9.0%	0.00	0.00	0.2%	0.1%	0.081	0.034	0.01%
Wethaq Takaful Insurance	0.037	0.000	0.00%	0.33	19.37	0.00	4	3.6%	-27.3%	0.00	0.00	1.7%	1.7%	0.102	0.024	0.01%
<b>Total Insurance - 8 Companies</b>							<b>609</b>			<b>0.01</b>	<b>0.02</b>					<b>1.42%</b>

Energy	Price			Valuation Multipels			MKT Cap	Price Performance		Trading Indicators		ROE	ROA	52 Week (KD)		MKT Cap
	Company	Close (KD)	Day Δ	Day % Δ	PBV(X)	PE(X)		DY%	Mn KD	MTD(%)	YTD (%)			Value (Mn KD)	(Mn Shrs)	
National Petroleum Services	0.671	-0.052	-7.19%	1.83	12.96	4.84	65	-10.5%	-11.8%	0.01	0.01	14.5%	11.6%	0.880	0.625	0.15%
Independent Petroleum Group	0.430	0.000	0.00%	0.79	14.40	6.98	78	-9.1%	-26.9%	0.00	0.00	5.5%	1.0%	0.614	0.368	0.18%
Burgan for Well Drilling Trading and Maintenance	0.113	-0.004	-3.42%	0.43	9.82	2.33	29	5.1%	-12.5%	0.04	0.35	4.4%	1.4%	0.161	0.094	0.07%
Energy House Holding	0.022	0.001	2.34%	0.77	NM	0.00	16	14.1%	-66.1%	0.00	0.01	-1.4%	-2.5%	0.086	0.019	0.04%
Gulf Petroleum Investment	0.016	0.000	2.56%	0.22	NM	0.00	7	-1.2%	-36.3%	0.00	0.26	-4.0%	-2.6%	0.031	0.013	0.02%
Senergy Holding	0.039	0.000	0.00%	0.78	46.31	0.00	8	-2.7%	-20.6%	0.00	0.00	1.7%	1.4%	0.063	0.036	0.02%
<b>Total Energy - 6 Companies</b>							<b>204</b>			<b>0.05</b>	<b>0.62</b>					<b>0.48%</b>



# DAILY MARKET COVERAGE REPORT

## NIC MENA SECURITIES - RESEARCH AND STUDIES DEP



Real Estate	Price		Valuation Multiples					MKT Cap	Performance		Trading Indicators		ROE	ROA	2 Week (KD)		MKT Cap
Company	Close (KD)	Day Δ	Day % Δ	PBV(X)	PE(X)	DY%	Mn KD	MTD(%)	YTD (%)	Value (Mn KD)	(Mn Shrs)	(%)	(%)	High	Low	%	
Mabaneh Co.	0.869	0.002	0.23%	1.91	17.94	1.52	1,079	0.7%	15.9%	0.25	0.29	11.1%	5.5%	0.910	0.717	2.52%	
Salhia Real Estate	0.458	-0.002	-0.43%	1.53	19.66	3.11	236	2.7%	-8.7%	0.46	1.01	7.9%	3.2%	0.578	0.428	0.55%	
Commercial Real Estate	0.101	-0.001	-1.27%	0.62	10.48	4.90	177	1.6%	-18.4%	0.69	6.86	6.2%	3.3%	0.140	0.094	0.41%	
National Real Estate	0.141	-0.001	-0.70%	0.79	1.28	0.00	262	5.2%	-22.9%	0.19	1.36	64.5%	38.6%	0.212	0.125	0.61%	
Tamdeen Real Estate	0.322	0.000	0.00%	0.62	7.42	3.11	129	-0.9%	-5.0%	0.00	0.00	9.2%	3.9%	0.375	0.296	0.30%	
Kuwait Real Estate	0.107	-0.002	-1.83%	0.80	13.28	2.67	99	5.9%	-37.3%	0.25	2.32	6.0%	2.5%	0.187	0.097	0.23%	
United Real Estate	0.073	0.000	-0.55%	0.46	227.81	0.00	78	-6.7%	-3.3%	0.00	0.02	0.2%	-0.1%	0.121	0.064	0.18%	
First Dubai for Real Estate Development	0.048	-0.001	-1.44%	0.47	32.68	0.00	35	4.6%	-53.7%	0.00	0.07	1.5%	1.2%	0.120	0.044	0.08%	
Al Mazaya Holding	0.049	-0.001	-1.01%	0.50	45.00	0.00	31	4.3%	-35.3%	0.08	1.66	1.1%	0.6%	0.089	0.043	0.07%	
Ajial Real Estate Entertainment	0.273	-0.009	-3.19%	0.42	17.40	1.77	53	-0.7%	-7.2%	0.00	0.00	2.4%	2.0%	0.345	0.268	0.12%	
Injazzat Real Estate Development	0.080	-0.001	-0.63%	0.48	6.80	6.25	27	-5.4%	-20.0%	0.01	0.15	7.0%	3.6%	0.114	0.070	0.06%	
Munshaat Real Estate Projects	0.066	0.000	0.00%	2.04	12.48	0.00	21	-5.7%	-7.7%	0.00	0.00	17.4%	1.5%	0.076	0.052	0.05%	
Aayan Real Estate	0.066	-0.001	-0.76%	0.47	63.46	0.00	27	6.9%	-25.4%	0.02	0.27	0.7%	1.4%	0.105	0.056	0.06%	
Al Argan International Real Estate	0.089	0.000	0.34%	0.29	32.42	0.00	23	16.8%	-24.4%	0.00	0.01	0.9%	0.3%	0.144	0.073	0.05%	
Al-Enmaa Real Estate	0.060	0.006	10.70%	0.60	NM	0.00	27	-11.6%	-27.2%	0.07	1.15	-5.9%	NM	0.091	0.050	0.06%	
Arkan Al Kuwait Real Estate	0.124	0.000	0.00%	0.87	12.09	4.84	31	1.6%	0.0%	0.00	0.00	7.4%	2.3%	0.152	0.113	0.07%	
Kuwait Business Town Real Estate	0.054	0.003	5.88%	0.64	14.21	0.00	31	8.7%	-37.3%	0.02	0.35	3.8%	2.8%	0.100	0.046	0.07%	
Dalqan Real Estate	0.204	-0.001	-0.49%	1.84	189.81	0.00	12	-4.7%	-5.5%	0.01	0.06	1.0%	1.0%	0.276	0.195	0.03%	
Sokouk Holding	0.024	0.000	-0.42%	0.55	NM	0.00	13	-12.6%	-27.6%	0.00	0.02	-2.9%	-1.7%	0.038	0.020	0.03%	
Tijara and Realestate Investment	0.055	0.002	4.01%	0.48	8.02	5.73	20	14.7%	-14.2%	0.22	3.98	6.0%	3.2%	0.089	0.044	0.05%	
Al-Arabiya Real Estate	0.030	0.000	-1.00%	0.36	NM	0.00	15	-2.3%	-28.4%	0.03	0.96	-23.1%	-7.3%	0.052	0.026	0.04%	
Aqar Real Estate Investments	0.055	0.000	-0.18%	0.45	17.57	6.06	13	-6.8%	-30.2%	0.00	0.00	2.6%	2.1%	0.097	0.052	0.03%	
Mashaer Holding	0.054	0.000	-0.18%	0.64	NM	0.00	10	2.1%	-22.2%	0.00	0.00	-6.5%	-3.2%	0.086	0.049	0.02%	
Dar Al Thuraya Real Estate	0.170	0.000	0.00%	1.47	25.07	0.00	25	0.0%	61.9%	0.00	0.00	6.0%	5.3%	0.172	0.092	0.06%	
Osos Holding Group	0.110	0.005	4.76%	0.92	8.36	9.52	12	13.4%	0.0%	0.00	0.01	11.2%	7.1%	0.147	0.094	0.03%	
Al Massaleh Real Estate	0.033	-0.001	-1.52%	0.54	NM	0.00	8	-21.9%	-36.7%	0.00	0.04	-15.4%	-3.2%	0.060	0.030	0.02%	
Kuwait Remal Real Estate	0.010	0.000	-0.99%	1.29	NM	0.00	3	-12.3%	-47.1%	0.00	0.47	-110.3%	-12.4%	0.024	0.009	0.01%	
Kuwait Real Estate Holding	0.033	-0.001	-2.11%	0.62	12.03	0.00	6	-12.2%	-37.1%	0.00	0.11	5.1%	1.7%	0.059	0.032	0.01%	
Taameer Real Estate Investment	0.024	0.001	5.73%	0.36	NM	0.00	5	17.1%	-45.0%	0.00	0.04	-6.5%	-4.9%	0.054	0.018	0.01%	
Sanam Real Estate	0.065	0.000	0.00%	0.85	28.93	0.00	8	8.9%	-17.9%	0.00	0.00	2.9%	2.8%	0.100	0.053	0.02%	
Mena Real Estate	0.029	-0.001	-2.66%	0.27	NM	0.00	4	-10.9%	-39.8%	0.01	0.47	-6.8%	-5.4%	0.105	0.030	0.01%	
Al Masaken International Real Estate Developmen	0.029	0.001	1.79%	0.45	NM	0.00	3	1.1%	-36.2%	0.00	0.00	-1.1%	-0.4%	0.069	0.027	0.01%	
Real Estate Trade Centers	0.051	0.000	0.78%	0.29	21.34	0.00	7	-9.7%	-27.1%	0.00	0.00	1.3%	1.1%	0.123	0.043	0.02%	
Land United Real Estate	0.068	0.000	0.00%	0.60	NM	0.00	10	0.0%	-27.6%	0.00	0.00	-4.8%	-1.5%	0.144	0.052	0.02%	
<b>Total Real Estate - 34 Companies</b>							<b>2,540</b>			<b>2.33</b>	<b>21.67</b>					<b>5.93%</b>	

# DAILY MARKET COVERAGE REPORT

NIC MENA SECURITIES - RESEARCH AND STUDIES DEP



Technology	Price			Valuation Multiples			MKT Cap	Price Performance		Trading Indicators		ROE	ROA	52 Week (KD)		MKT Cap
	Close (KD)	Day Δ	Day % Δ	PBV(X)	PE(X)	DY%	Mn KD	MTD(%)	YTD (%)	Value (Mn KD)	(Mn Shrs)	(%)	(%)	High	Low	%
Automated Systems	0.086	0.002	2.01%	0.75	NM	0.00	9	6.7%	-9.9%	0.00	0.04	-3.4%	-3.0%	0.116	0.074	0.02%
<b>Total Technology - 1 Companies</b>				<b>0.75</b>	<b>NM</b>	<b>0.0%</b>	<b>9</b>			<b>0.00</b>	<b>0.04</b>	<b>-3.40%</b>	<b>-2.96%</b>			<b>0.02%</b>

Telecom	Price			Valuation Multiples			MKT Cap	Price Performance		Trading Indicators		ROE	ROA	52 Week (KD)		MKT Cap
	Close (KD)	Day Δ	Day % Δ	PBV(X)	PE(X)	DY%	Mn KD	MTD(%)	YTD (%)	Value (Mn KD)	(Mn Shrs)	(%)	(%)	High	Low	%
Mobile Telecommunications	0.597	0.001	0.17%	2.17	14.09	5.54	2,583	1.5%	0.2%	1.53	2.56	15.6%	4.3%	0.698	0.564	6.03%
Kuwait Telecommunications	0.577	-0.003	-0.52%	2.61	13.34	5.17	576	4.2%	35.7%	0.09	0.15	20.1%	10.9%	1.189	0.418	1.35%
National Mobile Telecommunications	1.047	0.019	1.85%	0.97	13.34	3.40	525	13.8%	64.7%	0.08	0.08	7.2%	4.2%	1.280	0.615	1.23%
AAN Digital Services	0.016	0.000	0.00%	0.60	NM	0.00	14	0.0%	-2.4%	0.00	0.00	NM	NM	0.020	0.016	0.03%
Hayat Communications	0.060	0.001	1.02%	0.47	NM	0.00	5	-4.0%	-44.4%	0.00	0.08	-0.7%	-0.3%	0.124	0.050	0.01%
<b>Telecom - 5 Companies</b>							<b>3,703</b>			<b>1.70</b>	<b>2.87</b>					<b>8.65%</b>

Utilities	Price			Valuation Multiples			MKT Cap	Price Performance		Trading Indicators		ROE	ROA	52 Week (KD)		MKT Cap
	Close (KD)	Day Δ	Day % Δ	PBV(X)	PE(X)	DY%	Mn KD	MTD(%)	YTD (%)	Value (Mn KD)	(Mn Shrs)	(%)	(%)	High	Low	%
Shamal Az-Zour Al-Oula Power & Water	0.190	0.000	0.00%	2.14	14.55	9.47	209	-2.6%	-16.7%	0.08	0.42	19.1%	2.9%	0.247	0.188	0.49%
<b>Total Utilities - 1 Companies</b>							<b>209</b>			<b>0.08</b>	<b>0.42</b>					<b>0.49%</b>

<b>Total Market 156 Companies</b>				<b>1.99</b>	<b>31.03</b>	<b>4.00</b>	<b>42,833</b>			<b>38.37</b>	<b>132.40</b>					<b>100%</b>
-----------------------------------	--	--	--	-------------	--------------	-------------	---------------	--	--	--------------	---------------	--	--	--	--	-------------

## End of Report

The information contained in this document is proprietary to NIC and is for use only by the persons to whom it is issued. This document is confidential and may not be distributed either in part or in whole without the express agreement of NIC. It is intended solely for the use of the individual or entity to whom it is addressed and others authorized to receive it.

Note : ROE and ROA is calculated based on LFY net profit & shareholders' equity and LFY Operating Profits & Total Assets

Sources : National Investments Company Research and Studies Departments, Boursa, Refinitiv.



شركة الاستثمار الوطنية  
NATIONAL INVESTMENTS COMPANY

Sharq, Al Mutanabi Street, Khaleejia Tower | P.O. Box 25667, Safat 13117, Kuwait

T.: +965 2226 6666 | Fax: +965 2226 6793 | [www.nic.com.kw](http://www.nic.com.kw)